

**AQUARIUS PUMP COMPANY****25 - 150 GPM Model 1.25YML₂₅ - 200 Feet TDH****STANDARD SPECIFICATION**

Discharge - 1.25 inch discharge

Suction - 3 inch suction

Impeller - Semi-open, threaded, 4 vane: handles .80" solids

Volute - Right hand tangential discharge, eight positions

Mechanical Seal or Traditional Packing - Single, type 21, silicon carbide/tungsten carbide mechanical seal: Cycloseal® design, Run-dry available

Materials of Construction

- Cast iron casing, cast iron impeller
- Other materials available

MOUNTING OPTIONS

- **Close Coupled Electric**
 - Aquarius's Energy Efficient Design
 - Single and Three Phase Available
- **Frame Mount**
 - Aquarius F85
- **Engine Bracket**
 - Aquarius EM309 (SAE 5)

AVAILABILITY

- **Quick Ship**
 - Finished Product Regularly Stocked (48 Hours)
- **Preferred Pump**
 - Finished Components Regularly Stocked (10 business days)
- **Specialty Pump**
 - Aquarius Pump Company will design and manufacture a variation of this pump specifically designed for your application

**FEATURES & BENEFITS**

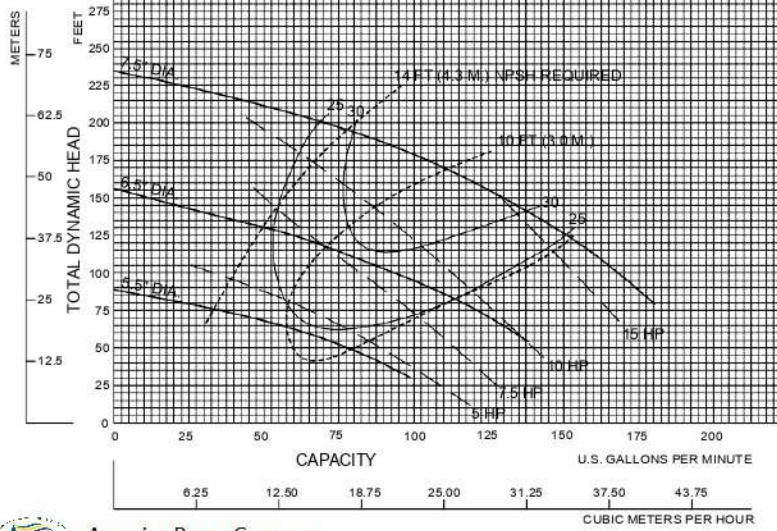
- **Aquarius's Tradition of Excellence:**
 - **Highest quality products**
 - **Experience**
 - Over 50 years in the centrifugal pump business
 - **Optimum Hydraulics**
 - In house engineering staff and test lab facilities
 - **Strong Local Dealer Support**
 - Our agricultural products are sold only through authorized dealerships
 - Dealerships provide full service to customers from sales to replacement parts
 - Dealers maintain and improve their knowledge at educational activities like Aquarius's "Pump School"
- **Exceptional Design:**
 - **Efficiency**
 - Effectively converts energy into fluid flow and pressure
 - **Long Product Life**
 - Thick walled castings
 - Heavy duty shafts
 - 20,000 hour bearings
 - Replaceable wear rings and shaft sleeves
 - Reduced thrust load through design and balance lines where appropriate

PERFORMANCE CURVES

**1.25 YML
3600 RPM**

Speed	Impeller Dia.	Style	Solids Dia.	N _S	Suction	Discharge	No. vanes
3525	VARIOUS	SEMI-OPEN	.80"	850	3"	1.25"	4

SINGLE VOLUTE MOUNTING CONFIG.: CC, VM, F, VF, EM, VC



Performances shown are for cool water, close to ambient temperature. Performance may vary. Check actual conditions and make adjustments for proper and/or performance adjustments.



Aquarius Pump Company

319101

Note:
Curves also available in 1800 and various RPM

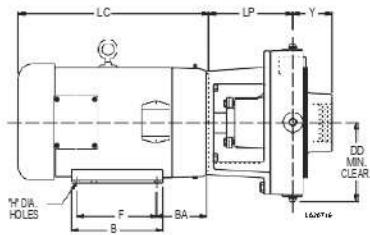


Figure 1

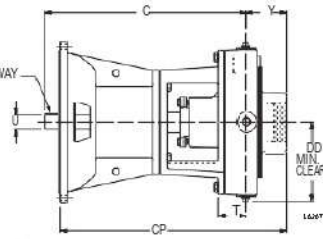
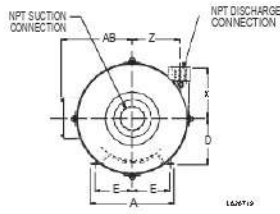


Figure 2

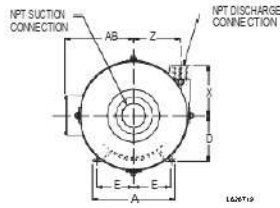
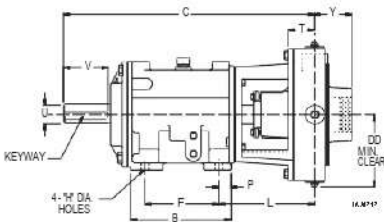
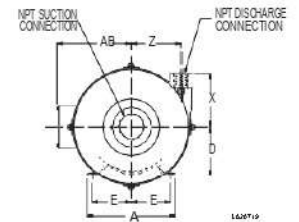


Figure 3



PUMP DIMENSIONS

MOUNT	Fig.	A	AB	B	BA	C	CP	D	DD	E	F	H	L	LC	LP	F	L	Y	X	Y	Z	KEYWAY
CC	1	9.5	7.94	8	4.5	-	-	-	7.38	4.25	7	0.41	-	13.69	7.34	-	-	-	5.75	3.56	5.38	-
F85	2	6.5	-	9.52	-	23.66	-	5.25	7.38	2.5	7	0.69	9.06	-	-	1.16	2	4.81	5.75	3.56	-	.50 X .25
EM309	3	-	-	-	-	17.57	19.77	-	7.38	-	-	-	-	-	-	-	1.25	-	5.75	3.56	5.38	25 X .12

Aquarius Pump Company

ISO9001:2000 CERTIFIED