

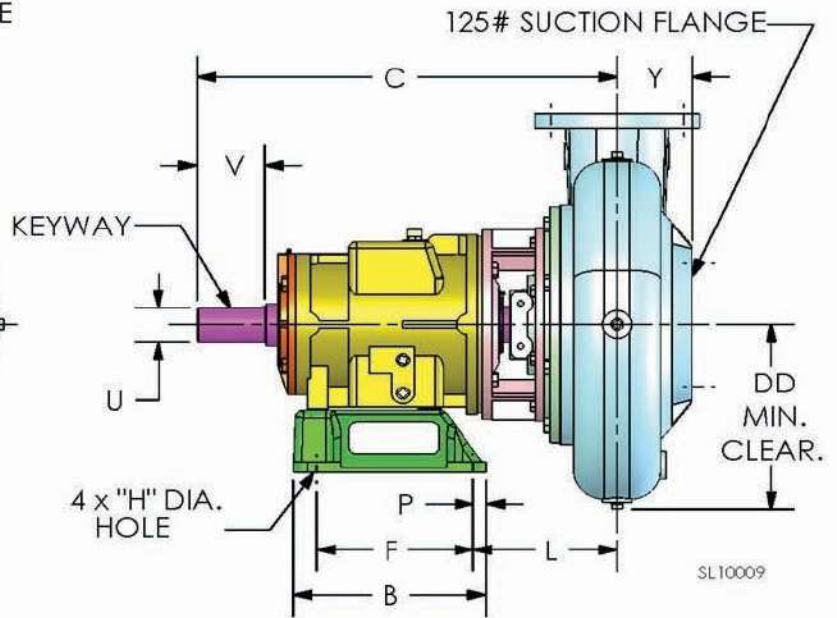
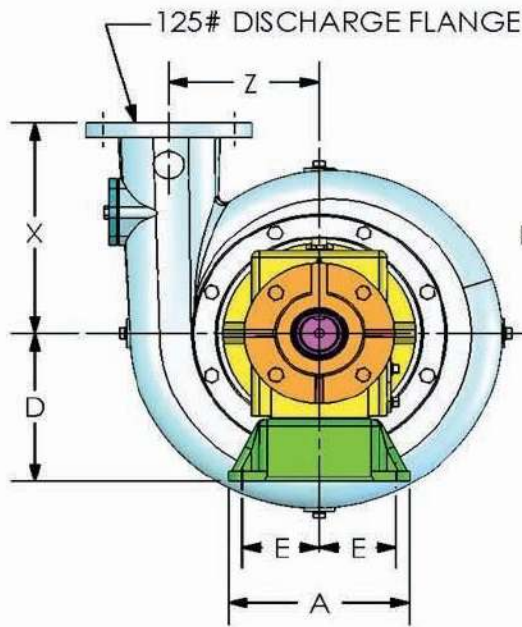


AQUARIUS PUMP COMPANY

10NHTB-F



- **Size:** 10NHTB - 10" discharge x 12" suction with 125# cast iron flanges
- **Casing:** Cast Iron
- **Impeller:** Enclosed - 2 vane. Handles 4.75" diameter solids
- **Wear Rings:** Replaceable (Double wear rings available)
- **Seal:** Aquarius's patented Cycloseal® design with Run-Dry™ oil lubrication system. John Crane T-2 single mechanical seal with Viton® elastomers, stainless steel hardware and tungsten- vs. silicon carbide seal faces for abrasion resistance
- **Shaft Sleeve:** Heat treated 416 stainless steel
- **Bearings:** Heavy duty, grease lubricated, deep groove ball bearings, with a minimum of 20,000 hours bearing life



A typical picture of the pump is shown. Please contact Aquarius Pump Company for further details. All information is approximate and for general guidance only.

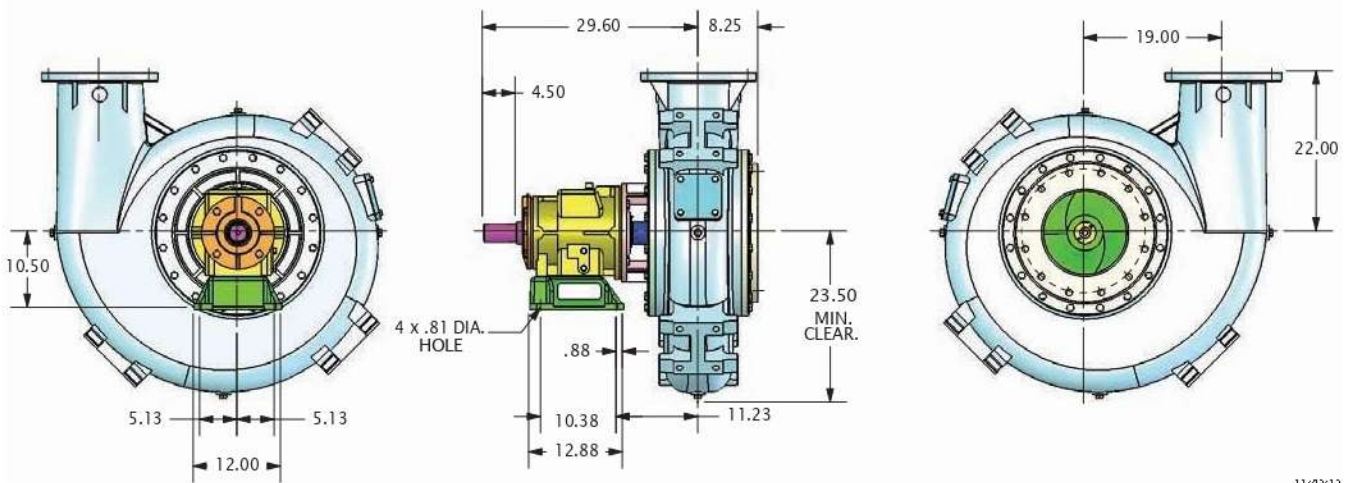
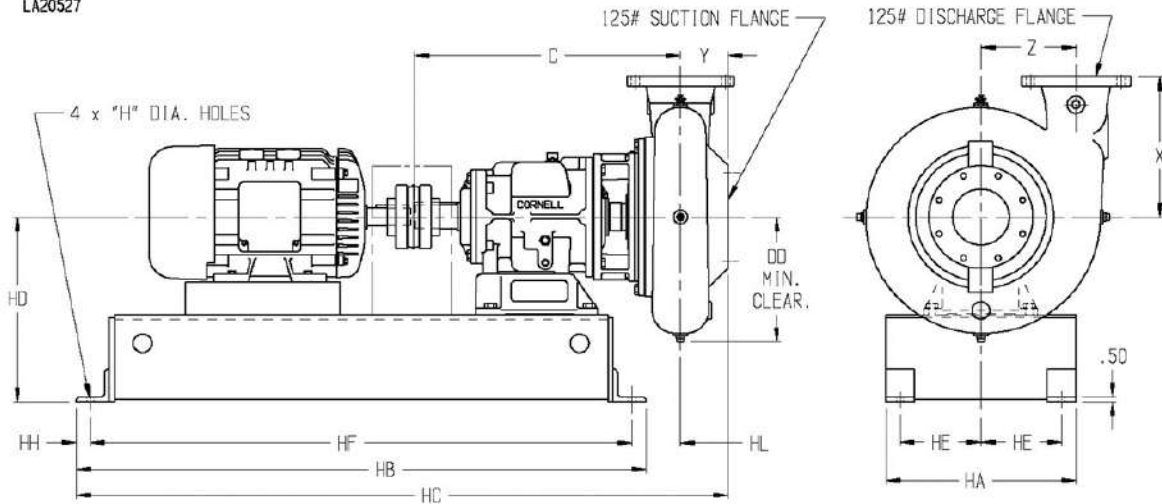


PRODUCT DATA SHEET

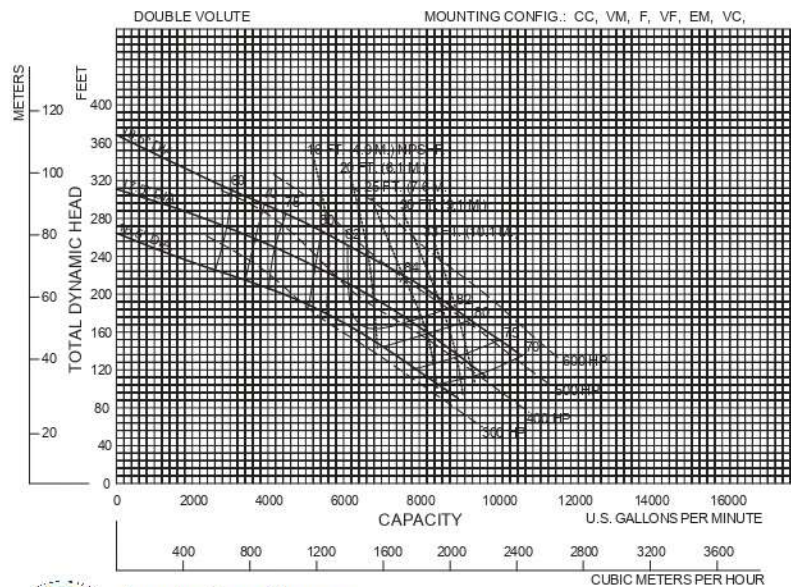
AQUARIUS PUMP COMPANY

10NHTB-F

LA20527



11/02/12



Aquarius Pump Company