

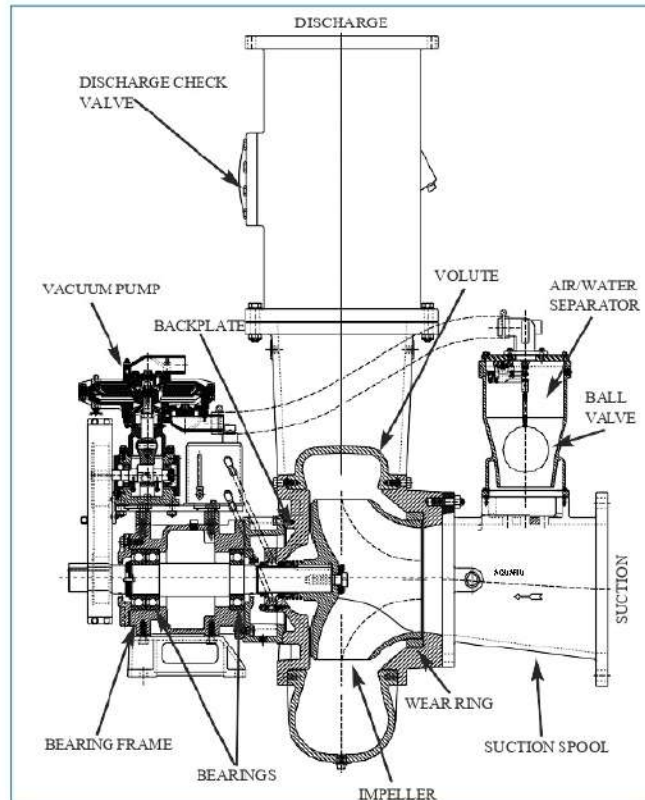


# AQUARIUS PUMP COMPANY

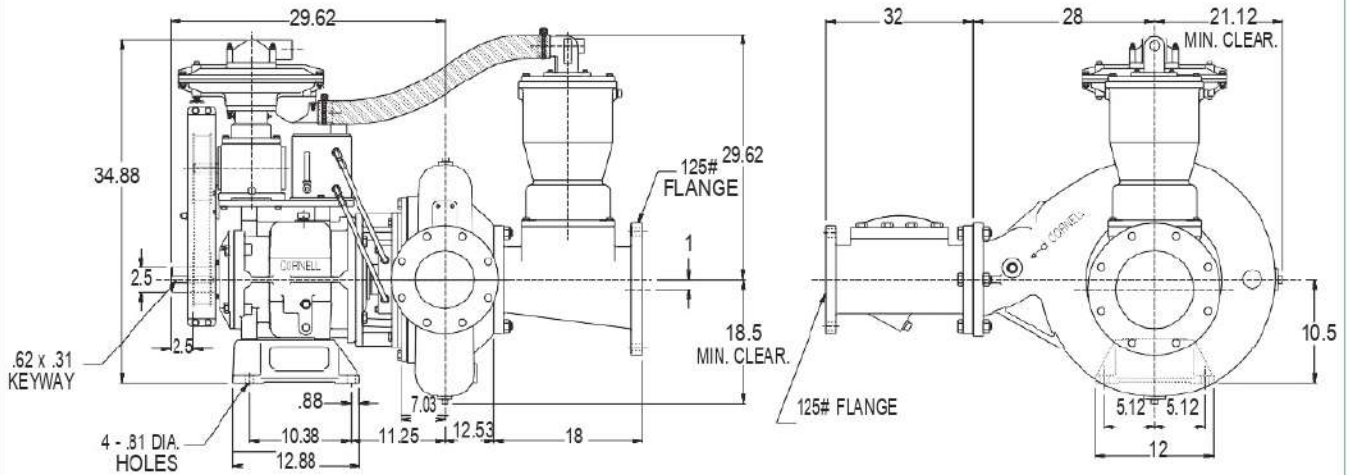
## Model 16NHGH-F Redi-Prime®

### PUMP SPECIFICATIONS

- **Size:** 16NHGH- 16" discharge x 16" suction with 125# cast iron flanges.
- **Casing:** Cast Iron.
- **Impeller:** Enclosed - 3 vane. Handles 4.25" diameter solids.
- **Wear Rings:** Replaceable. (Double wear rings available).
- **Seal:** Aquarius's patented Cycloseal® design with Run-Dry oil lubrication system. John Crane T-2 single mechanical seal with Viton® elastomers, stainless steel hardware and tungsten- vs. silicon-carbide seal faces for abrasion resistance.
- **Check Valve:** SwingFlex® Val-Matic®. (Option available at additional cost).
- **Shaft Sleeve:** Heat treated 416 stainless steel.
- **Bearings:** Heavy duty, grease lubricated, deep groove ball bearings, with a minimum of 50,000 hours bearing life.
- **Hardware:** Stainless steel float linkage. A positive seating vacuum priming valve prevents water carry-over to the vacuum, pump or atmosphere.
- **Vacuum Pump** - 50 SCFM Maximum.



## PUMP DIMENSIONS

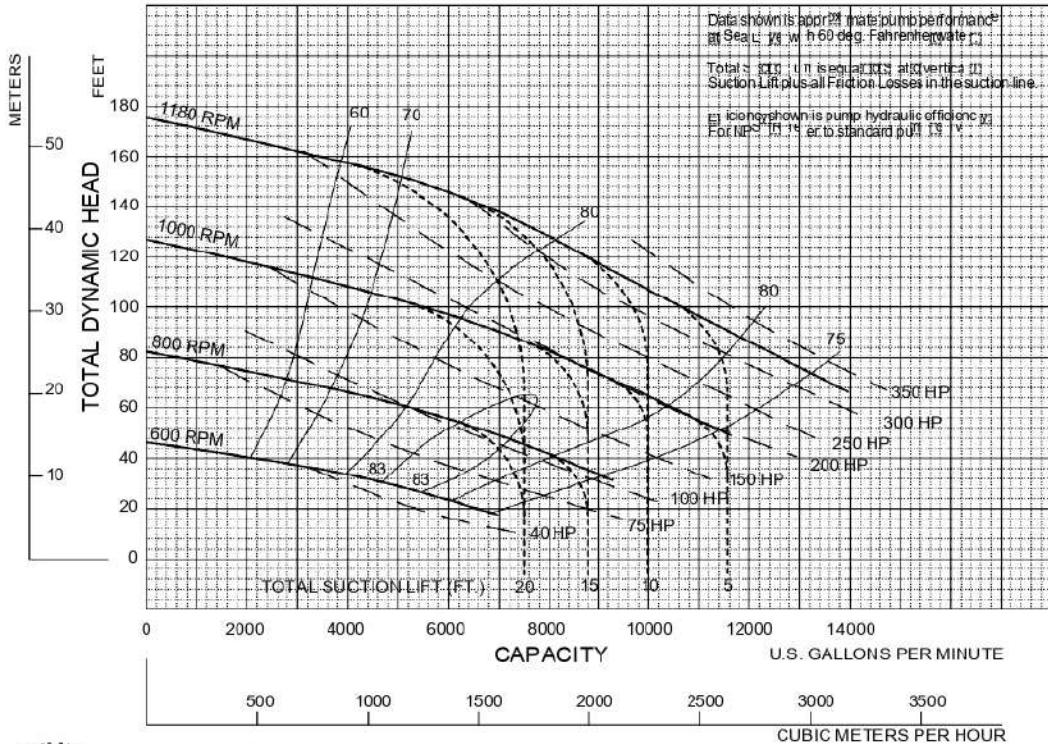


## PERFORMANCE CURVES

Feet x .305 = Meters  
 Inches x 25.4 = Millimeters  
 GPM x .227 = Cubic Meters/Hour  
 GPM x 3.785 = Liters/Minute  
 HP x .746 = KW

Speed	Impeller Dia.	Style	Solids Dia.	N <sub>S</sub>	Suction	Discharge	No. vanes
VARIOUS	19.5"-0°	ENCLOSED	4.25"	3500	16"	16"	3

SINGLE VOLUTE MOUNTING CONFIG.: F, EM



Data shown is for best pump performance at Sea Level with 60 deg. Fahrenheit water. Total Suction Lift is equal to all vertical Suction Lift plus all Friction Losses in the suction line. Efficiency shown is pump hydraulic efficiency. For NPSH refer to standard pump literature.

Performances shown are for cool water, frame mounted configuration with Cyclo Seal. Other liquids, seal arrangements or mounting configurations may require performance adjustments.  
 Add 1.5 HP for belt driven diaphragm vacuum pump. Performance curve does not include discharge check valve losses.



Aquarius Pump Company

10/6/03

**Aquarius Pump Company**

ISO9001:2000 CERTIFIED