

**AQUARIUS PUMP COMPANY**

75 - 250 GPM

2 WH

75 - 200 Feet TDH

STANDARD SPECIFICATION**Discharge** - 2 inch threaded discharge**Suction** - 2.5 inch threaded suction**Impeller** - Enclosed cast iron**Volute** - Right hand tangential discharge, four positions**Mechanical Seal or Traditional Packing** - Single type 1 carbon ceramic mechanical seal: Cycloseal® design, run-dry available**Footprint** - Matches Aquarius's historical 2W**Materials of Construction**

- Cast iron bronze fitted
- Other materials available

PURCHASE OPTIONS**• Complete Pump**

- Fully assembled at the factory
- Ready to go to the field

• Pump End Kit

- Finished components
 - PrePainted

Easy assembly

- Common tools
- Simple instructions

Obtain drives locally or through Aquarius

MOUNTING OPTIONS**• Close Coupled Electric**

- Standard JP motor shaft
 - Standard Efficiency
 - Aquarius's Energy Efficient Design

• Frame Mount

Aquarius F5

• Engine Bracket

- Aquarius EM5 (SAE 5)
- Aquarius EM309 (SAE 5)

**FEATURES & BENEFITS****• Aquarius's Tradition of Excellence:**

- Highest Quality Products**
- Experience**
 - Over 50 years in the centrifugal pump business
- Optimum Hydraulics**
 - In house engineering staff and test lab facilities
- Strong Local Dealer Support**
 - Our agricultural products are sold only through authorized dealerships
 - Dealerships provide full service to customers from sales to replacement parts
 - Dealers maintain and improve their knowledge at educational activities like Aquarius's "Pump School"

• Economically Priced:

- Component Design**
 - Efficient manufacturing through increased volume of common parts
- Versatility**
 - The ability to mix and match components reducing local inventory of both parts and wholegoods with a wide variety of pumps and mounting configurations for the customer

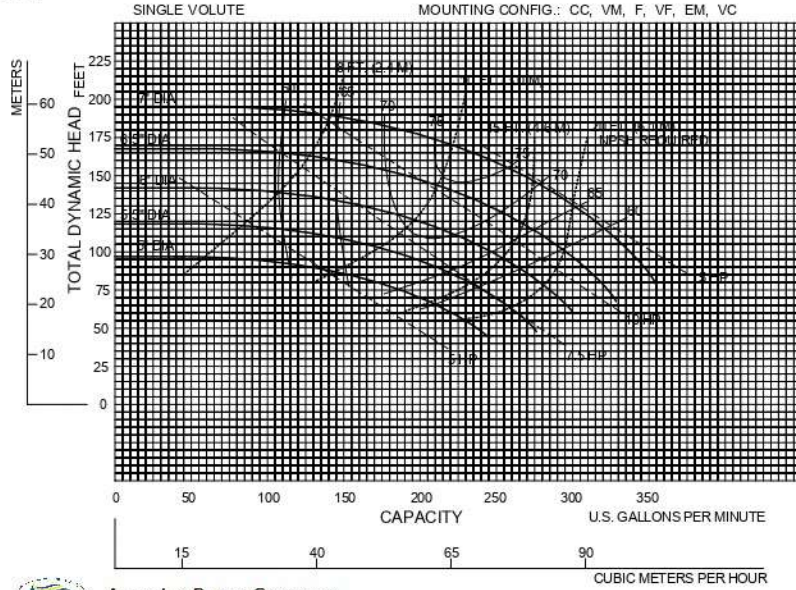
• Exceptional Design:

- Efficiency**
 - Effectively converts energy into fluid flow and pressure
- Long Product Life**
 - Thick walled castings
 - Heavy duty shafts
 - 20,000 hour bearings
 - Replaceable wear rings and shaft sleeves
 - Reduced thrust load through design and balance lines where appropriate

PERFORMANCE CURVES

2 WH
3600 RPM

Speed	Impeller Dia.	Style	Solids Dia.	N _S	Suction	Discharge	No. vanes
3525	VARIOUS	ENCLOSED	.34"	1173	2.5"	2"	5



Performance shown for clean cold water. Each pump is equipped with a standard electric motor. Other mounting styles or fluids may require horsepower and/or performance adjustments.



Aquarius Pump Company

0311404

Note:
Curves also available in 1800 and various RPM

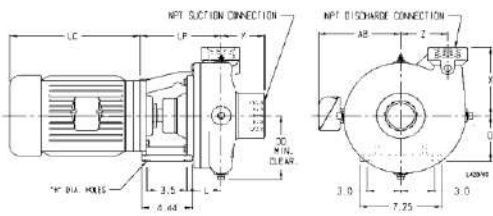


Figure 1

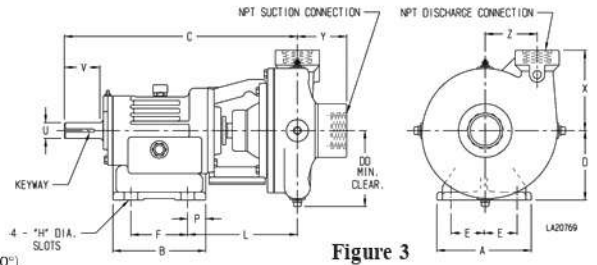


Figure 3

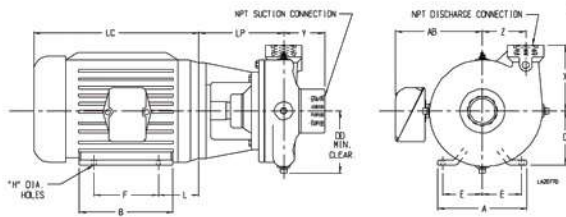


Figure 2

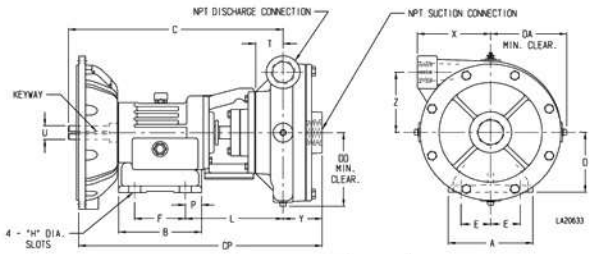
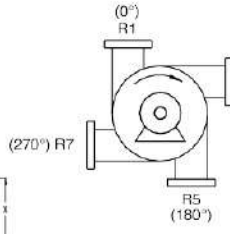


Figure 4

PUMP DIMENSIONS

MOUNT	AK	Fig.	A	B	C	CP	D	DA	DD	E	F	H	L	P	T	U	V	X	Y	Z	LP	KEYWAY
CC	4.5	1	-	-	-	-	-	-	6.5	-	-	-	3.09	-	-	-	-	5.12	3.91	4.12	7.18	-
	8.5	2	-	-	-	-	-	-	6.5	-	-	-	-	-	-	-	-	5.12	3.91	4.12	8	-
F5	-	3	7.5	7.36	22.53	-	5.5	-	6.5	2.62	4.5	0.56	8.78	1.44	-	1.25	3	5.12	3.91	4.12	-	.25 x .12
EM5	-	4	7.5	7.36	18.62	22.14	5.5	6.5	6.5	2.62	4.5	0.56	8.78	1.44	-	1.25	-	5.12	3.91	4.12	-	.25 X .12
EM309	-	4	-	-	18.25	20.77	-	-	6.5	-	-	-	-	-	2.37	1.25	-	5.12	3.91	4.12	-	.25 X .12

MOTOR DIMENSIONS

MOTOR FRAME	AK DIM.	A	B	D	E	F	H	AB	BA	LC
143-5	4.5	6.5	5.94	3.5	2.75	5	0.34	5.62	2.88	10
182-3	4.5	8.62	6.5	4.5	3.75	5.5	0.41	6.75	3.5	12.25
	8.5	8.62	6.5	4.5	3.75	5.5	0.41	6.75	3.5	12.25
213-5	8.5	9.5	8	5.25	4.25	7	0.41	7.94	4.5	13.69
254-6	8.5	11.25	11.25	6.25	5	10	0.53	9.5	5	17.94

Aquarius Pump Company