

**AQUARIUS PUMP COMPANY****350 - 2100 GPM    Model 4614M    50 - 450 Feet TDH****STANDARD SPECIFICATION**

**Discharge** - 4 inch discharge

**Suction** - 6 inch suction

**Impeller** - Semi-open, threaded, 8 vane: handles 1" solids

**Volute** - Right hand centerline discharge, eight positions

**Mechanical Seal or Traditional Packing** - Single tungsten silicon mechanical seal: Cycloseal® design, Run-Dry™ available

**Materials of Construction**

- Ductile iron casing, ductile iron impeller
- Other materials available

**MOUNTING OPTIONS**

- **Close Coupled Electric**
  - Aquarius's Energy Efficient Design
- **Frame Mount**
  - Aquarius F16
  - Aquarius F18
  - Aquarius F18DB
- **Engine Bracket**
  - Aquarius EM16 (SAE 1, 2, 3, 4)
  - Aquarius EM18 (SAE 1, 2, 3, 4)
  - Aquarius EM18DB (SAE 1, 2, 3, 4)
- **Oil Filled Bearing Frame**
  - Available
- **Redi-Prime Self Priming System**
  - Available

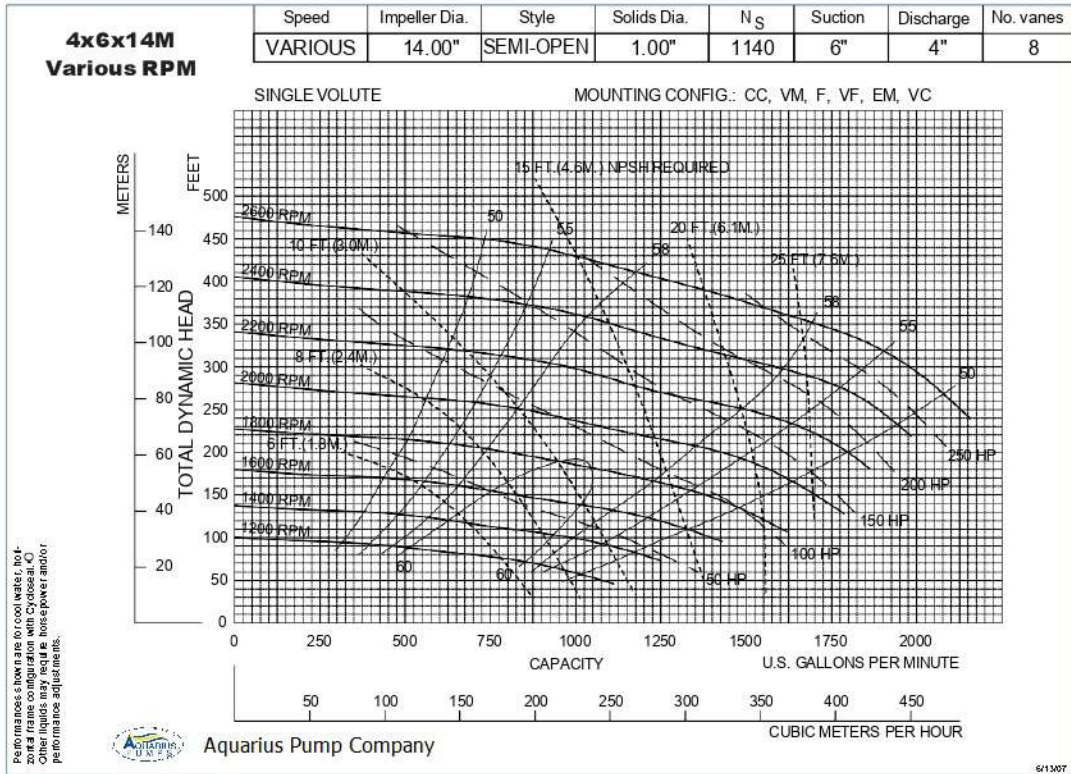
**AVAILABILITY**

- **Specialty Pump**
  - Aquarius Pump Company will design and manufacture a variation of this pump specifically designed for your application

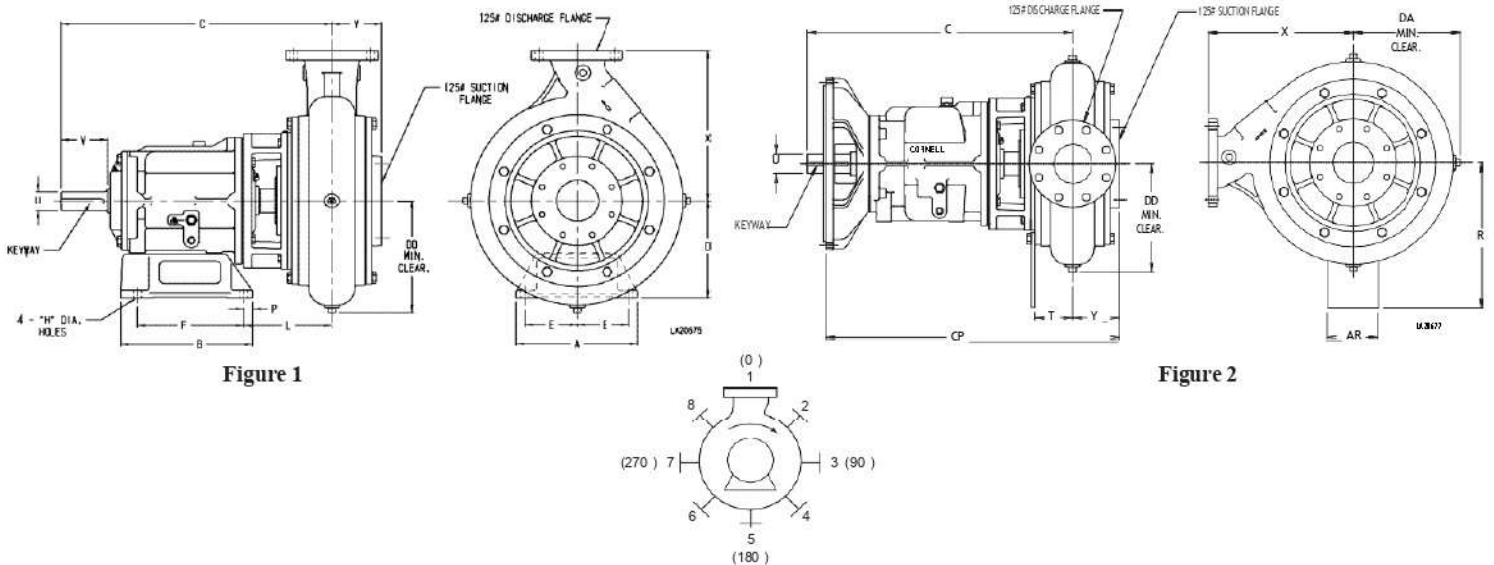
**FEATURES & BENEFITS**

- **Aquarius's Tradition of Excellence:**
  - **Highest quality products**
  - **Experience**
    - Over 60 years in the centrifugal pump business
  - **Optimum Hydraulics**
    - In house engineering staff and test lab facilities
  - **Strong Local Dealer Support**
    - Our agricultural products are sold only through authorized dealerships
    - Dealerships provide full service to customers from sales to replacement parts
    - Dealers maintain and improve their knowledge at educational activities like Aquarius's "Pump School"
- **Exceptional Design:**
  - **Efficiency**
    - Effectively converts energy into fluid flow and pressure
  - **Long Product Life**
    - Thick walled castings
    - Heavy duty shafts
    - 20,000 hour minimum bearing calculation
    - Replaceable wear rings and shaft sleeves

# PERFORMANCE CURVES



**Note:** Curves also available in 1800 and 1200 RPM



**Figure 1**

**Figure 2**

## PUMP DIMENSIONS

MOUNT	Fig.	A	AR	B	C	CP	D	DA	DD	E	F	H	L	LP	P	R	T	U	V	X	Y	Z	KEYWAY
F16	1	12	-	12.88	25.49	-	9.75	-	11.25	5.12	10.38	0.81	7.6	-	0.88	-	-	2	4.5	16	3.27	-	50 X .25
F18	1	12	-	12.88	26.47	-	10.5	-	11.25	5.12	10.38	0.81	8.1	-	0.88	-	-	2.5	4.5	16	3.27	-	.62 X .31
EM16	2	-	8	-	25.49	26.75	-	11.25	12	-	-	-	-	-	14.41	3.3	2	-	16	3.27	9.25	50 X .25	
EM18	2	-	8	-	26.47	27.75	-	11.25	12	-	-	-	-	-	14.41	3.3	2.5	-	16	3.27	9.25	.62 X .31	

**Aquarius Pump Company**

CERTIFIED TO ISO 9001:2000