

**AQUARIUS PUMP COMPANY****400 - 2200 GPM Model 4NHM17 50 - 375 Feet TDH****STANDARD SPECIFICATION**

Discharge - 4 inch discharge

Suction - 5 inch suction

Impeller - Semi-open, 3 vane: handles
2.62" solids

Volute - Right or left hand tangential discharge,
eight positions

Mechanical Seal - Single, type 2, silicon carbide/tung-
sten carbide mechanical seal: Cycloseal® design, Run-
Dry™ available

Materials of Construction

- Ductile iron casing, cast iron impeller
- Other materials available

**MOUNTING OPTIONS**

• **Horizontal Frame Mount**

- Aquarius F18
- Aquarius F18DB

• **Vertical Frame Mount**

- Aquarius VF18

• **Vertical Coupled**

- Aquarius VC18

• **Engine Bracket**

- Aquarius EM18 (SAE 1, 2, 3)
- Aquarius EM18DB (SAE 1, 2, 3)

• **Oil Filled Bearing Frame**

- Available

• **Redi-Prime Self Priming System**

- Available

AVAILABILITY

• **Specialty Pump**

- Aquarius Pump Company will design
and manufacture a variation of this pump
specifically designed for your application

FEATURES & BENEFITS

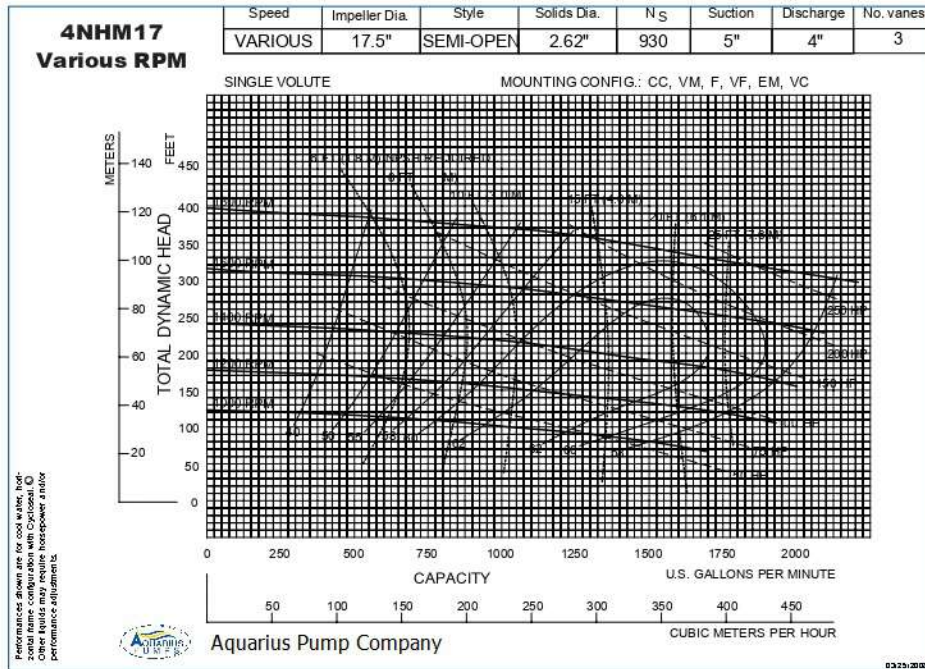
• **Aquarius's Tradition of Excellence:**

- **Highest quality products**
- **Experience**
 - Over 50 years in the centrifugal pump business
- **Optimum Hydraulics**
 - In house engineering staff and test lab facilities
- **Strong Local Dealer Support**
 - Our agricultural products are sold only through
authorized dealerships
 - Dealerships provide full service to customers from
sales to replacement parts
 - Dealers maintain and improve their knowledge at
educational activities like Aquarius's "Pump
School"

• **Exceptional Design:**

- **Efficiency**
 - Effectively converts energy into fluid flow and
pressure
- **Long Product Life**
 - Thick walled castings
 - Heavy duty shafts
 - 20,000 hour bearings - minimum
 - Replaceable wear rings and shaft sleeves
 - Reduced thrust load through design and balance
lines where appropriate

PERFORMANCE CURVES



Note:
Curves also
available in
1800 and
1200 RPM

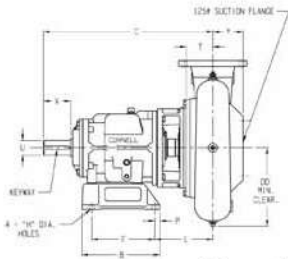


Figure 1

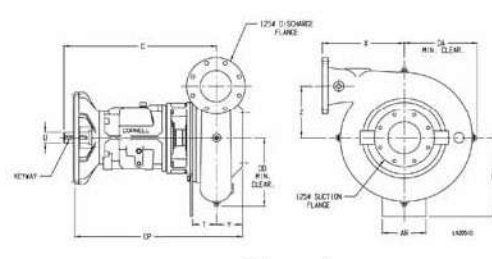
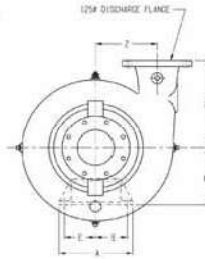


Figure 3

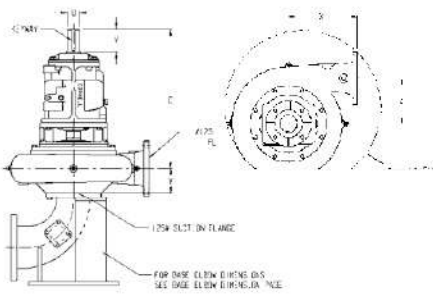


Figure 4

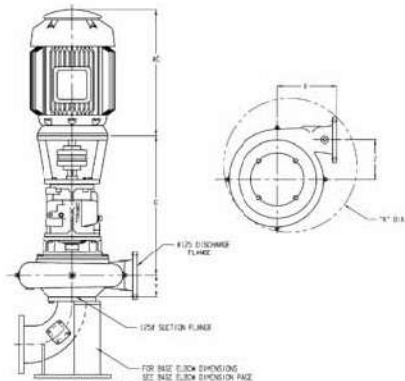
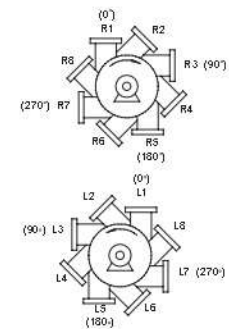


Figure 5



PUMP DIMENSIONS

MOUNT	Fig.	A	AR	B	C	CP	D	DA	DD	E	F	H	K	L	LP	P	F	T	U	V	Y	Z	KEYWAY	
F18	1	12	-	12.88	28.45	-	10.5	-	13.25	5.12	10.36	0.81	-	10.09	-	0.88	-	-	2.5	4.5	15.5	5	10.25	.62 X .31
VF18	2	-	-	-	28.45	-	-	-	-	-	-	-	35	-	-	-	-	-	2.5	4.5	15.5	5	10.25	.62 X .31
VC18	3	-	-	-	38.22	-	-	-	-	-	-	-	35	-	-	-	-	-	-	-	15.5	5	10.25	.62 X .31
EM18	4	-	8	-	28.45	31.47	-	13.25	13.12	-	-	-	-	-	-	14.4	-	-	2.5	-	15.5	5	10.25	.62 X .31

VC MOTOR DIMENSIONS

NEMA FRAME	182	184	213	215	254	256	284	286	324	326	364	366	40	40	44	44	50
AG	13.16	14.16	18.25	19.75	22.31	24.06	24.5	26	27.4	28.9	26	26	28.6	28.6	33	3	35

Aquarius Pump Company

CERTIFIED TO ISO 9001:2000