



AQUARIUS PUMP COMPANY

6NHTC19

AVAILABLE MOUNTING CONFIGURATIONS

6NHTC19-RP-F REDI-PRIME® FRAME MOUNT
 6NHTC19-RP-EM REDI-PRIME® ENGINE MOUNT
 6NHTC19-F FRAME MOUNT
 6NHTC19-EM ENGINE MOUNT
 6NHTC19-VF VERTICAL FRAME MOUNT
 6NHTC19-VC VERTICAL COUPLED

OPERATING LEVELS

MIN FLOW	850 GPM	193 m ³ /h
MAX FLOW	4200 GPM	954 m ³ /h
DISCHARGE SIZE	6"	152 mm
SUCTION SIZE	8"	203.2 mm
SOLIDS HANDLING	3"	76.2 mm
MAX SPEED	2100 RPM	2100 RPM
SHUT-OFF HEAD	665'	203 m
BEP HEAD	492'	150 m
BEP FLOW	3075 GPM	698 m ³ /h
BEP PERCENT	72%	72%



A typical picture of the pump is shown. Please contact Aquarius Pump Company for further details. All information is approximate and for general guidance only.

PARTS	STANDARD MATERIAL (ALL IRON)
IMPELLER	DUCTILE IRON
VOLUTE	DUCTILE IRON
SHAFT	17-4 PH STAINLESS STEEL
SHAFT SLEEVE	416 STAINLESS STEEL (CHROME PLATED)
SUCTION COVER	DUCTILE IRON
BACKPLATE	DUCTILE IRON
BEARING FRAME	CAST IRON

The 6NHTC19 pump is designed with Aquarius's renowned quality and durability. It features a 6" discharge, 8" suction, and enclosed 2-vane impeller and single, centerline, tangential volute. Aquarius's patented Cycloseal® design is standard, with a Type 2 single mechanical seal with Buna-N elastomers, stainless steel hardware and tungsten carbide vs. silicon carbide seal faces for abrasion resistance.

- Handles solids up to 3"
- High head operation
- Parts interchangeability with the 6NHTB19
- Patented Cycloseal® design
- Heavy-duty bearing frame
- Redi-Prime® available for fully-automatic continuous priming
- RunDry™ option (Indefinite run dry capability)



AGRICULTURE



FOOD



INDUSTRIAL



MINING



MUNICIPAL



OIL & GAS



REFRIGERATION



RENTAL

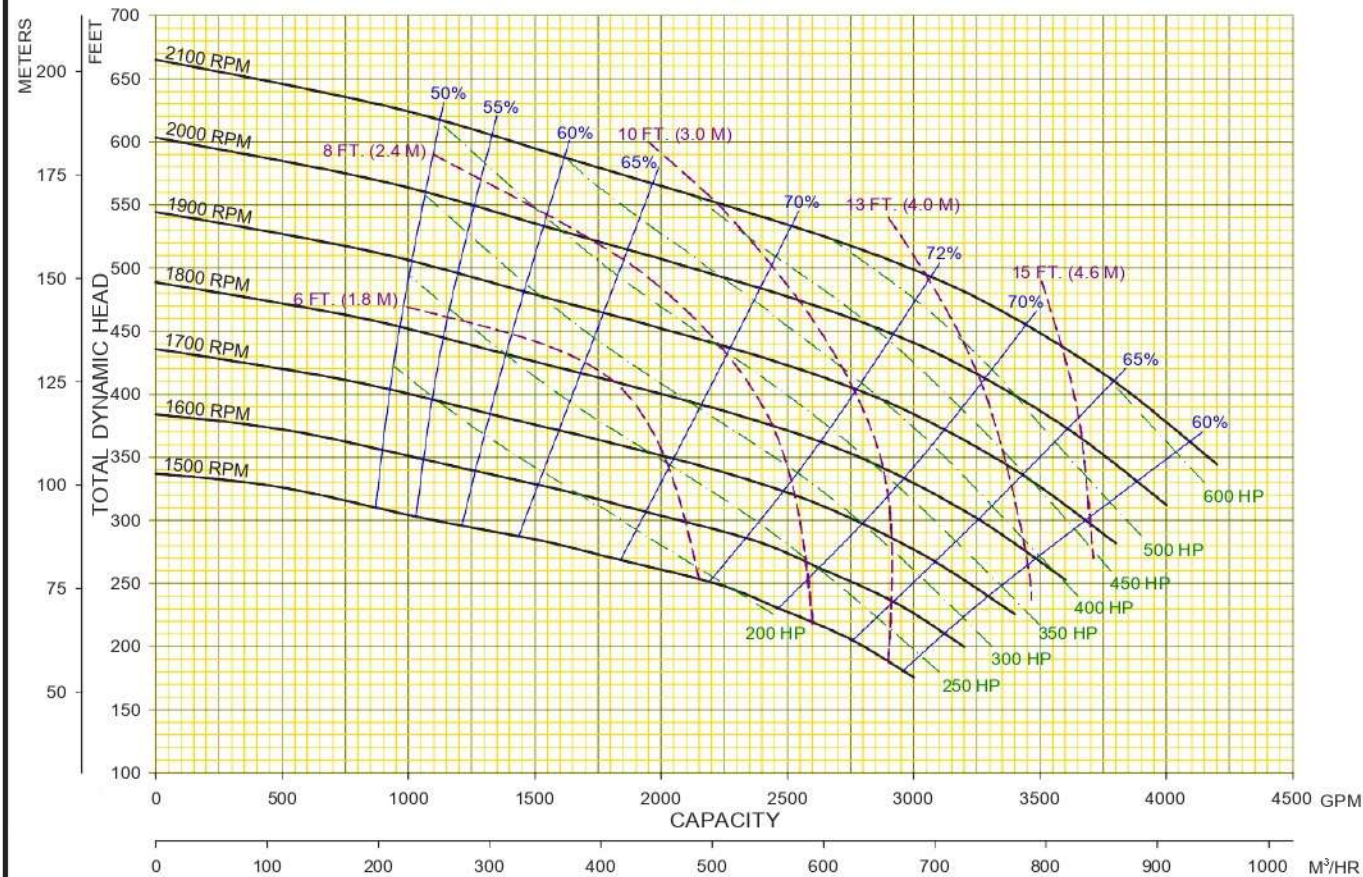


AQUARIUS PUMP COMPANY

6NHTC19

Performances shown are for S.G. 1.0
60°F water, frame mounted configuration
with Cycloseal. Other mounting styles or
S.G. may require curve adjustments.

Speed	Impeller Dia.	Style	Volute	Solids Dia.	Ns	Suction	Discharge	No. Vanes
VARIOUS	19.50"	ENCLOSED	SINGLE	3.00"	1110	8"	6"	2



Aquarius Pump Company	01	12/8/15	AE	MODEL : 6NHTC19	CURVE NO.
	02	12/23/15	AE	TYPE : SOLIDS HANDLING	6NHTC19VA